

ANDEX proposes the collection of paint sludge, reduction of the water substitute frequency in a flush booth, and the mitigation of a running cost.

Patented Product



"Electrolytic Sludge Collector"
for the flush paint booth

SC-60

SLUDGE COLLECTOR

Various merits are expectable in the flush paint booth!

◎ Features of SC-60

- Paint sludge is collected automatically and a whole bag can be taken out.
- The chemical administration of a flocculating agent or a booth cleaner becomes unnecessary.
- Since circulation water cannot oxidize easily, it becomes rust prevention in the flush booth.
- The bad smell which comes out of the exhaust gas in the flush booth is decreased.
- The collector can be installed easily for a compact design.

You can see an animation./



Please use "electrolytic sludge collector" for the flush paint booth for the effluent treatment and the measures against sludge at the flush paint booth.

SC-60

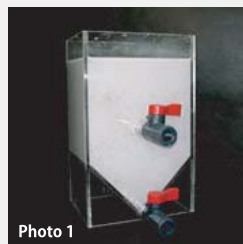
SLUDGE COLLECTOR

An effect is demonstrated for the effluent treatment and measures against sludge in the flush paint booth!

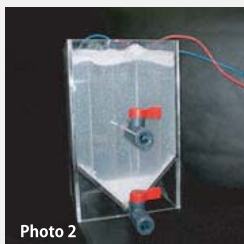


About the sewage disposal by electrolysis

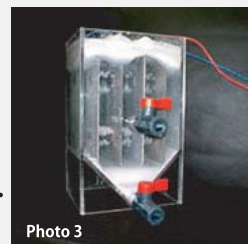
- Polluted water (the photograph shows emulsification state) is put into the electrolysis vessel (+ electrode side aluminum board, - electrode SUS board), and it turns on electricity. (Photo 1)
- Polluted water is decomposed by the aluminum hydroxide generated from + electrode side, and also it is decomposed into water, pigment and others. (Photo 2)
- The sludge generated at this time becomes a non-adhering thing, light sludge surfaces with the effect of the hydrogen gas generated by electrolysis, and heavy sludge settles down. (Photo 3)



After 10min.

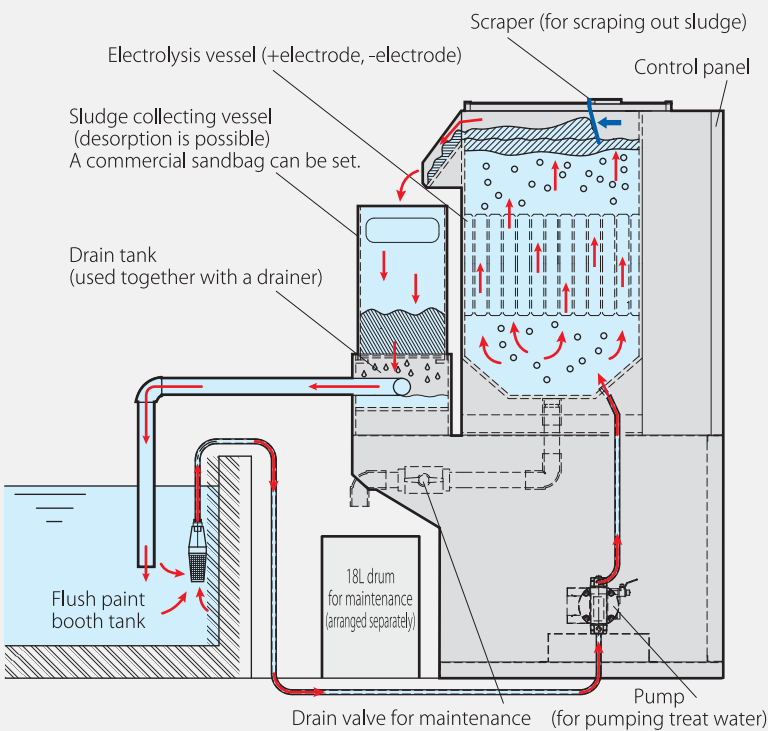


After 20min.

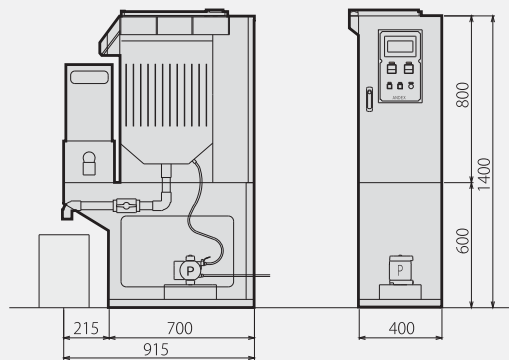


Polluted water will be decomposed into frog and the processed pure water with time. The bad smell by the bacteria which are generated in the flush paint booth etc. is also decreased by a bactericidal action.

Operation flow of a sludge collector



SC-60 type dimensional drawing



● SC-60 specifications

Power source	AC 100 or 200V
Power consumption	200W (max.400W 4A)
Air source	0.7Mpa or more
Equipment weight	140kg
Electrolysis vessel capacity	60L
Amount of treat water	360L/hr
Expend hours of electrode	300 - 500 hours

Reference of selection

- When SC-60 is operated for 8 hours, water amount to 2.8-ton in the flush booth can be supported.
- When SC-60 is operated for 24 hours, water amount to 8.6-ton in the flush booth can be supported.

ANDEX

Creates comfortable environment.
ANDEX Co., Ltd.

Head Office / 15-29 Higashionomichi, Onomichi-shi, Hiroshima
 Tokyo Branch / 5-11-9 Higashiooi, Shinagawa-ku, Tokyo
 Osaka Branch / 1-23-19 Esaka-cho, Suita-shi, Osaka
 Nagoya Branch / 4-11-17 Oosu, Naka-ku, Nagoya-shi
 Gifu Technical center / 4-18-2 Soharasakae-machi, Kakamigahara-shi, Gifu
 Fukuoka Branch / 12-28 Kamikawabata-machi, Hakata-ku, Fukuoka-shi
 Development Center / 4835-2 Takasu-cho, Onomichi-shi, Hiroshima
 Sanba Manufacturing Plant / 3045-7 Sanba-cho, Onomichi-shi, Hiroshima

+81 848-46-3711 ☎+81 848-47-1211
 +81 3-5479-0911 ☎+81 3-5479-0912
 +81 6-6368-6311 ☎+81 6-6368-6312
 +81 52-238-0981 ☎+81 52-238-0977
 +81 58-322-8181 ☎+81 58-322-8259
 +81 92-292-7981 ☎+81 92-292-7982
 +81 848-46-5641
 +81 848-46-5511 ☎+81 848-47-5555